



# VIDCENTUM TECHNOLOGIES

*Engineering Intelligent Things ...*



## Built for Energy Intelligence Applications

The VT-ENERGY/24 AI Studio is a high-performance workstation designed for Energy simulations and intelligence applications.

## AI/ML Workloads (GPU enabled)

The studio includes GPUs to support the specific functionalities of energy simulations and workflows.

## On Premises DB Server and Deployment

The studio enables full control of your data. It provides robust tools for data management and security.

## User Apps (Integrations) and Admin Portal

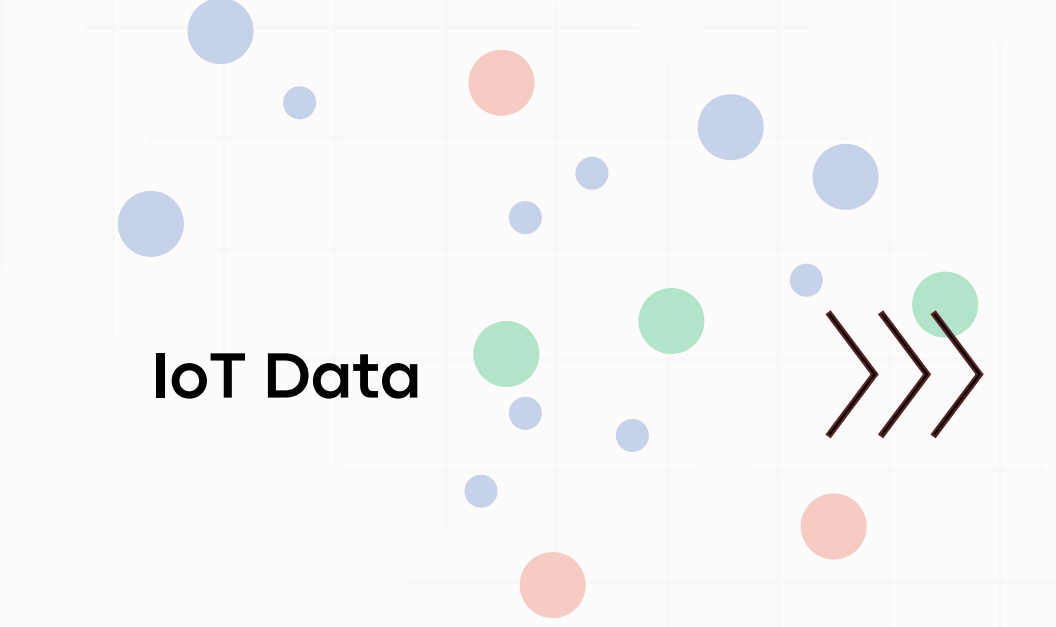
Access reports, updates, data backup, integrations, and other essential support through the Admin portal.

## Cost-Effective and Open Source

The VT-ENERGY/24 AI studio bundles open-source and licensed software to minimize costs while maximizing functionality.

# 'VT-ENERGY/24 AI STUDIO' FOR ENERGY INTELLIGENCE APPLICATIONS

# Energy Assets / Data Sources



**VT-ENERGY/24  
Workstations**

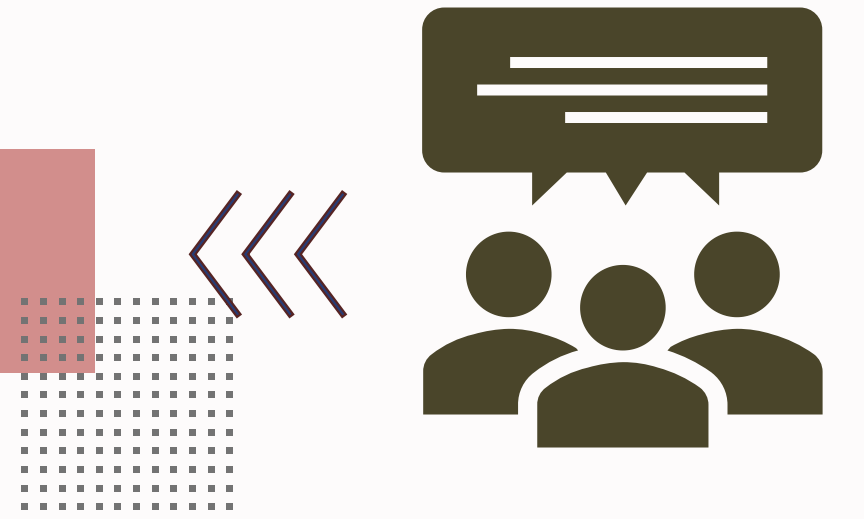
**AI STUDIO**



**Energy Intelligence  
Applications**

**Data/Context Templates**

**User Apps  
Admin Portal**



Data/Context  
Templates provide the  
operational context for  
the Road Intelligence.

## AI STUDIO AND CLOUD SERVICES FOR ENERGY SIMULATIONS & INTELLIGENCE

# THANK YOU

LET'S EXPLORE HOW OUR 'VT-ENERGY/24 AI STUDIO' CAN BENEFIT YOUR ORGANIZATION.

EMAIL: [STUDIO@VIDCENTUM.COM](mailto:STUDIO@VIDCENTUM.COM)